

November 2017 Edition

Hello Idle Free Technician,

This month we revisit installation of the frame-rail unit (FRU) to a truck chassis, and follow-up inspections. If you have questions, please call us anytime.



Attention: *These Tech Tips are used to heighten awareness about certain subjects related to Idle Free products. **This is not an installation manual.** Always use the appropriate installation manual for the system you are installing.*

Mounting the eAPU's Frame Rail Unit

Required Tools

Torque Wrench (calibrated)
Lifting Cart (600 lb.)

Consideration: Protect your APU from the elements with a quarter fender add-on. Fender installation should take place before you mount the frame rail unit to ensure that the fender does not interfere with the positioning of the APU.

Frame Rail Unit Mounting Options

- L-brackets
- Frame Gripper
- Direct Mount
- Series 2000 and 3000 systems have their own mounting hardware

Torque Requirements and Documentation

Always follow the installation instructions provided for the system you are installing.



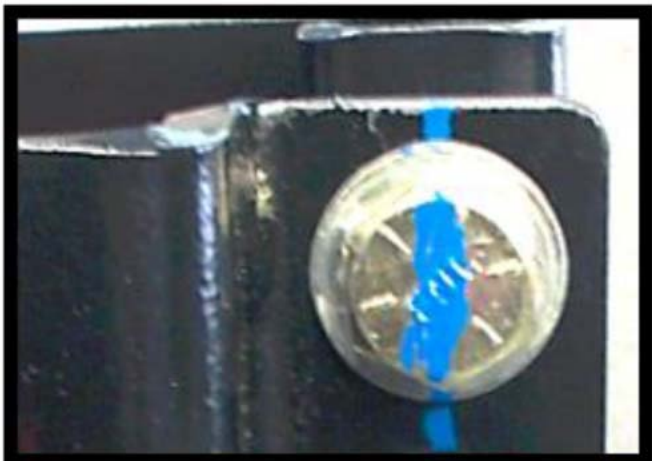
WARNING

Warning: Torque must be measured as a dry torque without use of lubrication or anti-seize product. Improper torque of the mounting bolts can lead to loss of clamp force or bolt failure.

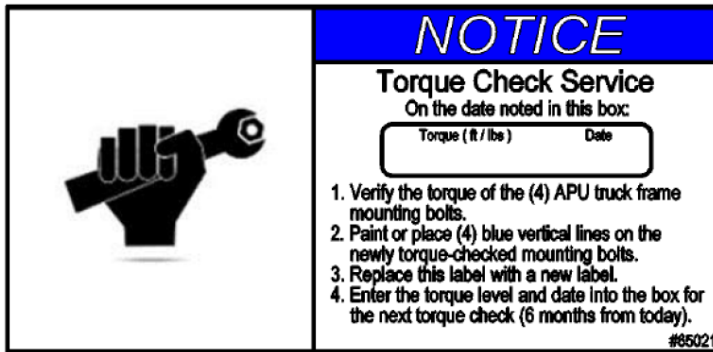
Note: All torque values in our manuals are dry-torque. DO NOT use lubricant or thread locker

After unit is installed to frame rail and proper torque applied to mounting hardware, add a vertical witness mark to each bolt.

- Make sure the mark extends to the frame bracket
- The mark verifies proper torque (212 foot pounds, dry torque). ***Check instructions to ensure torque value for system you are installing***
- The mark is used as a visual sign of bolt head movement.

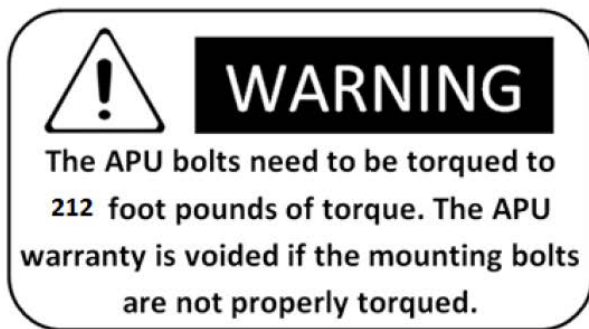


Affix Service Label to top of the APU cover



Enter date 6 months from installation date. This date is the next Torque Check Service Date.

Mounting hardware should be inspected on a regular schedule, not to exceed 6 months.



All manuals and support documents are located in the Idle Free Dealer Portal. Go to our [home page](#) and click on [IFS Dealer Portal](#) at the top of the page to find the appropriate manual for your system.

Technical Support Phone: (920) 206-9333 ext. 1
Technical Support email: techsupport@idlefreesystems.com