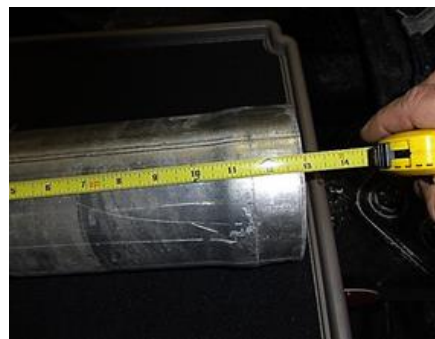


Cascadia Exhaust Kit – Installation Instructions

- Remove the Cascadia exhaust tip.
The exhaust tip will be re-used.



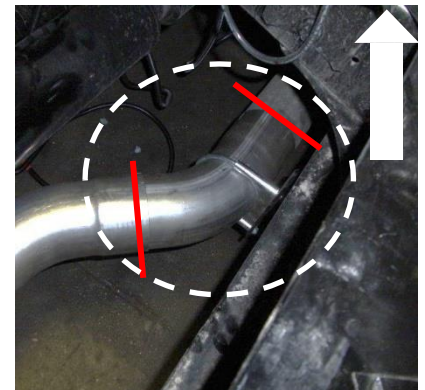
- Remove the final 13 inches of the Cascadia exhaust pipe.



- Install the double bell 45° exhaust onto the newly cut portion of the Cascadia exhaust system. Keep the 45° exhaust pipe parallel to the ground/driveshaft. Attach truck mounting clamp/hanger.



Truck Mounting Clamp



- Install the single bell 45° exhaust onto the 1st portion of the Cascadia exhaust system. Keep the 45° exhaust pipe parallel to the ground/driveshaft.
- Re-attach the Cascadia flare tip removed at the beginning of this process.

