

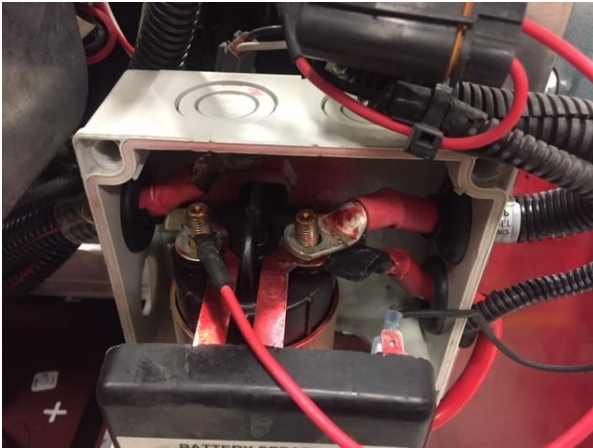
Series 1000 Battery Separator Field Retrofit/Upgrade Procedure

1. De-energize: Remove truck side Marincos from unit (Black and Green)

⚠ WARNING

ELECTRIC SHOCK HAZARD
ENERGIZED BATTERY CONNECTIONS
Short-Circuits can lead to ignition source,
equipment damage and fire hazard.

2. Remove cables from Current Battery separator (ground spade, cable to green marinco, cable to batteries (gang cable, cable to fuse), and DC power harness.



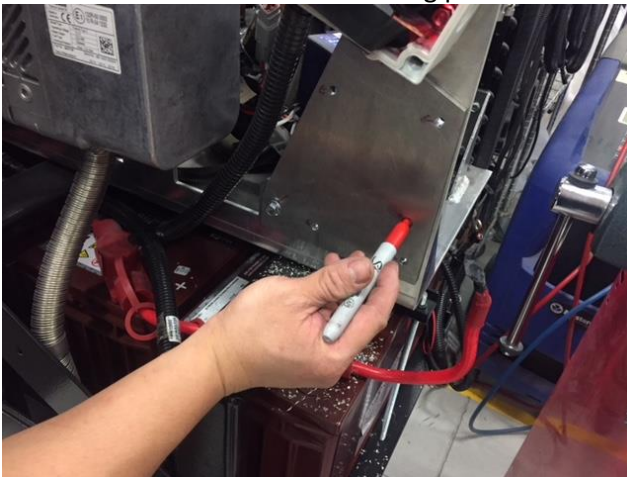
3. Remove battery separator from frame (if 3.7 remove protective box as well)



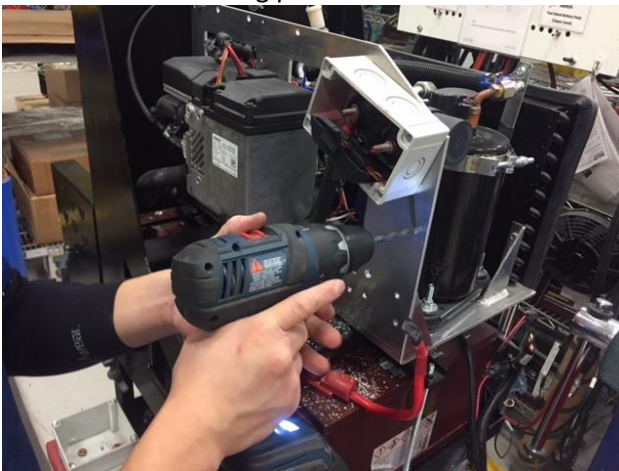
4. Loosen nut that holds compressor vibration isolator (below fuse)



5. Install mounting plate (slot goes under nut you loosened in step 4, bottom left hole should line up with hole that was previously used for battery separator, use bolt from separator to hold bracket in place)
6. Mark the 4 holes from mounting plate that interface with the frame



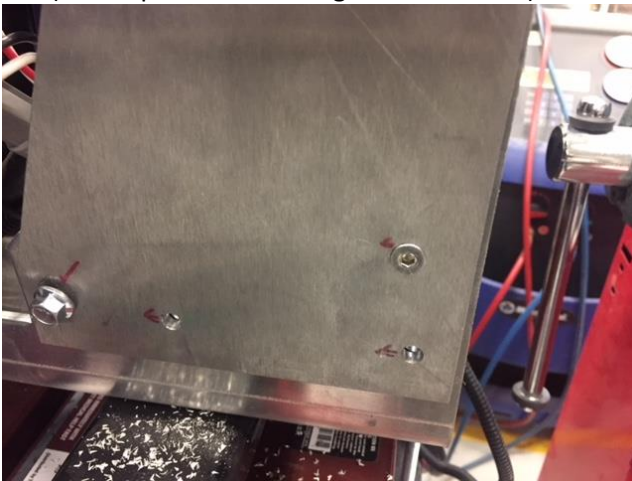
7. Remove mounting plate and drill out marked holes (1/4") on frame



8. Remove Start Capacitor bolt then remove Start Capacitor from inside of frame



9. Install Mounting plate, and insert flat head bolt into countersunk hole, re-install start capacitor (C-clamp bolt hole facing outside of unit)



10. Mount Battery separator using the 4 remaining holes (stud connections on bottom) with hardware included (bolt head on separator, nut on backside of frame)



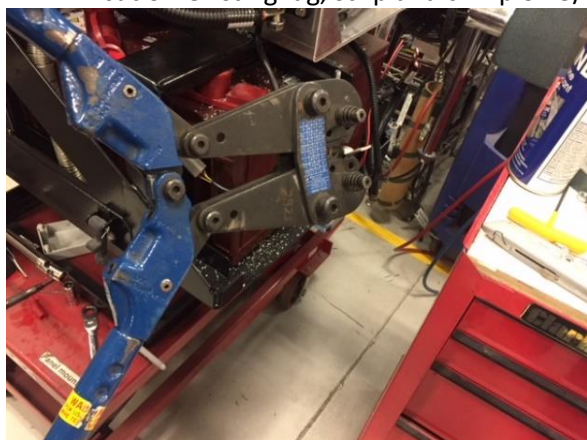
11. Remove cable going to inside of green Marincó (32050) and replace with long cable in kit (32122), install on separator



12. Remove cable going to fuse (32048) and replace with short cable in kit (32504), install on separator opposite stud as cable from Marinco



13. Cable coming from Battery (gang cable – 32062 on 3.7 system or Cable - 32039 on 3.6 system), cut off existing lug, strip and crimp on 3/8" lug and install heat shrink



14. Install 3/8" Battery Cable lug, the 32048 Separator to Fuse Cable lug, and the 32066 red wire lug onto battery separator (same side as cable to fuse)



15. Cut off existing ground spade connection on the 32051 cable, strip wire and crimp into new ground wire butt splice, use heat gun to melt Perma-Seal heat shrink, connect Deutsch connectors from ground wire to battery separator



16. Make sure all cable connections are tight and then coat with corrosion preventative



- 17. Attach protective caps to separator studs
- 18. Route and secure cables going to Marinco connectors
- 19. Close cover and reinstall Marinco connections
- 20. Installation Complete

Idle Free Systems Technical Support:
Phone: 920-206-9333
Fax: 920-206-6099
Email: techsupport@idlefreesystems.com