

# BA600 Inspection Instructions

*This document identifies specific actions that need to be taken based on the proper identification of the Idle Free Frame type and a physical frame inspection.*

## No Tools Required for Inspection

1. Locate the APU serial number. *The APU serial number is printed onto a white label, on the back left wall of the APU, under the APU cover or on the outside of the unit, above the condenser fan.*

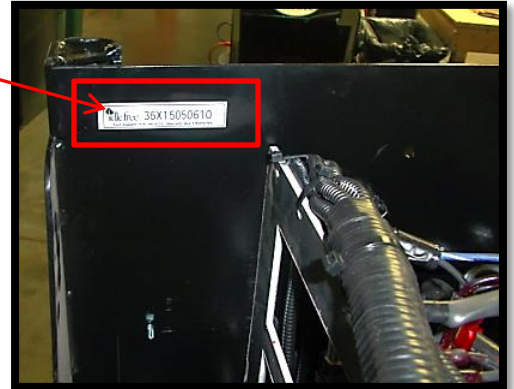
**36X15050610**

The APU serial number is in this format.

The 3<sup>rd</sup> serial number entry will be an "X" or a "Z"

2. If the 3<sup>rd</sup> serial number entry is an "X", the unit does not have defect A and no frame work is required.
  - If the APU is mounted directly to the frame, the unit does not have defect B and no mounting changes are required.
  - If the APU is mounted to the truck's frame using back U-channel brackets or aluminum clamp brackets (defect B), the brackets will have to be removed and changed. Refer to IFS document #61284.

**Figure 1**  
Location of the APU serial number



**X**

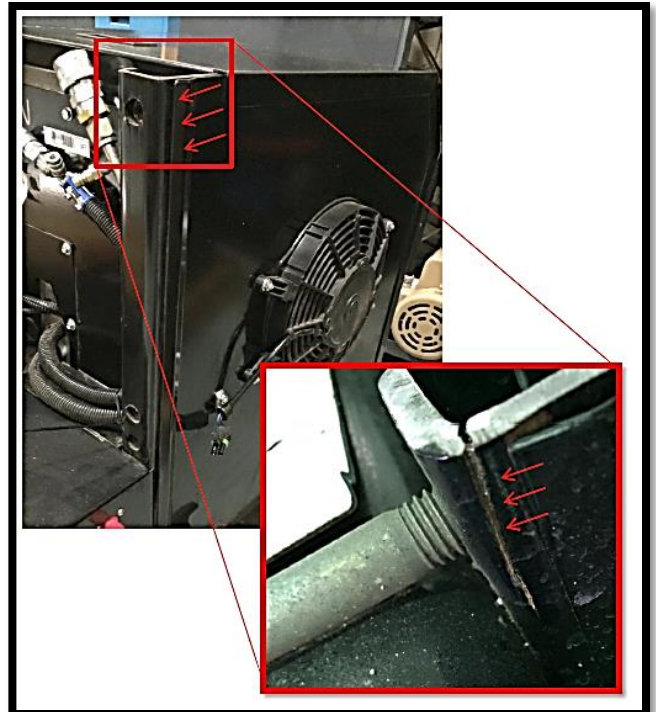
3. If the 3<sup>rd</sup> serial number entry is a "Z", review the APU frame for noticeable cracks (defect A). See Figures 2 & 3.



**Figure 2**

**Z**

Look for frame cracking at this location.



**Figure 3**

## BA600 Inspection Instructions

4. If the APU frame review reveals any cracking or tearing, remove the APU from the truck and contact IFS customer service for additional instructions.
5. If the APU frame review does not reveal any frame cracking or tearing, confirm that a top of frame gusset is in place.

**IFS Customer Service  
920 206 9333**

The gusset is in place on the top of this APU's frame channel.

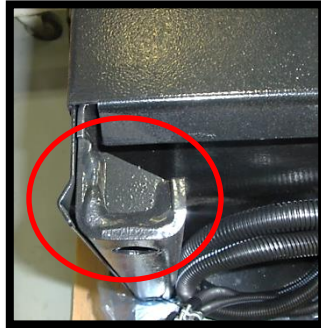


Figure 4

The gusset is not in place on the top of this APU's frame channel.



Figure 5

6. If the APU frame gussets are in place, follow the instructions on IFS document #61284, "Replacing frame mounting brackets".
7. If the APU frame gussets are not in place, follow the gusset installation instructions, document #61277.
8. Once the frame gussets have been added, follow the instructions on IFS document #61284, "Replacing frame mounting brackets".